

DANBKR40-B

40CM SINGLE BOWL GREY SINK

Product



Features

- Single bowl sink
- Designed for top mount /flush mount/ under mount
- Gun metal grey finish
- Grade 304 stainless steel
- Thickness 1.2mm

Accessories Included

- Waste strainer & plug included

Product Dimensions

Dimensions: 440mm x 440mm x 230mm

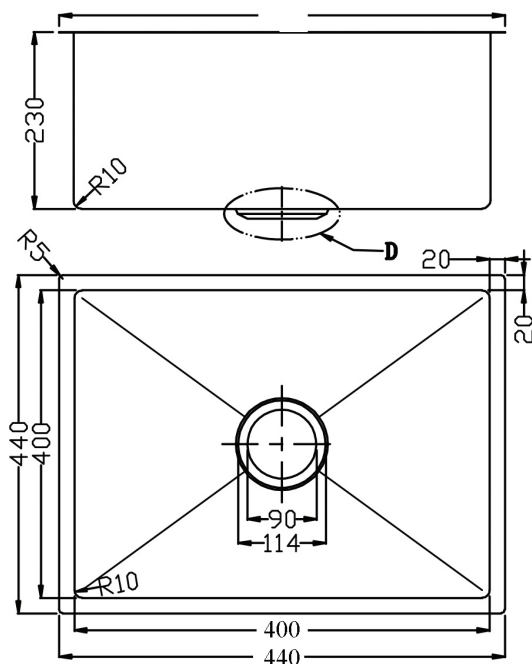
Cutout: 400mm x 400mm

Installation Information

DO NOT CUT BENCH WITHOUT SINK

Manufacturer's template cut out measurements are a guideline only. Always use the physical product measurements for cut-outs as the manufacturer's template may differ from the actual product dimensions over time.

Dimensions



Please note:

Dimensions and specifications are a guide only refer to the instruction manual for full instructions. Every effort has been made to ensure this information is correct. However, due to product improvement Daniela Appliances reserves the right to make changes to products without prior notice.

